



**Rosendale Road, SE24**

1 bedroom flat to let

**£453**

Furnished

## Property Details

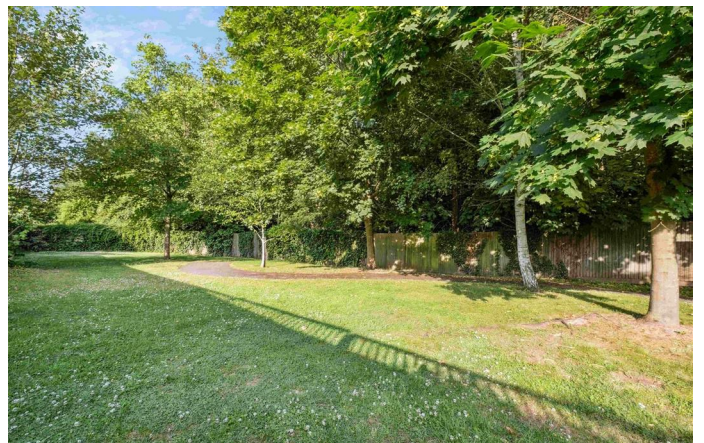
A modern bright and airy one double bedroom, first floor apartment, nestled next to Brockwell Park. This gated development offers all the advantages of modern design and security, including an allocated parking space, access to a communal garden and is ideally located a stone's throw from Brockwell Park. A smart open-plan reception is the heart of the home, comfortable dimensions to relax and unwind, dine and entertain, with a fully equipped, integrated kitchen opening out onto the space, offering an abundance of storage options and surface space. The bedroom is spacious and well proportioned, large enough to double up as home office whilst still maintaining comfortable sleeping arrangement and also benefits from large built in wardrobes, the property is completed by a family-sized modern bathroom.

Having access to a green space is now more important than ever for our wellbeing – luckily, the lush, open spaces of the award-winning Brockwell Park are right next to the property, along with its iconic 1930's Lido and unrivalled sports facilities. A pleasant walk through the park will bring you to leafy Herne Hill, and all that this village-like neighbourhood has to offer, the location cannot be overstated. The property is located in one of South London's new hotspots with the pubs and restaurants of Herne Hill, the Sunday market and popular pedestrianised area around the train station all on your doorstep. Thameslink train services to Blackfriars, St Pancras and beyond to Luton, and a 10 minute service to Victoria make Herne Hill a well-connected area (for Luton and Gatwick

## Features

- One double bedroom
- Open plan reception
- Secure gated development
- Bright and airy throughout
- Communal gardens
- Allocated Parking
- Minutes from Brockwell Park
- Short walk to Herne Hill Station

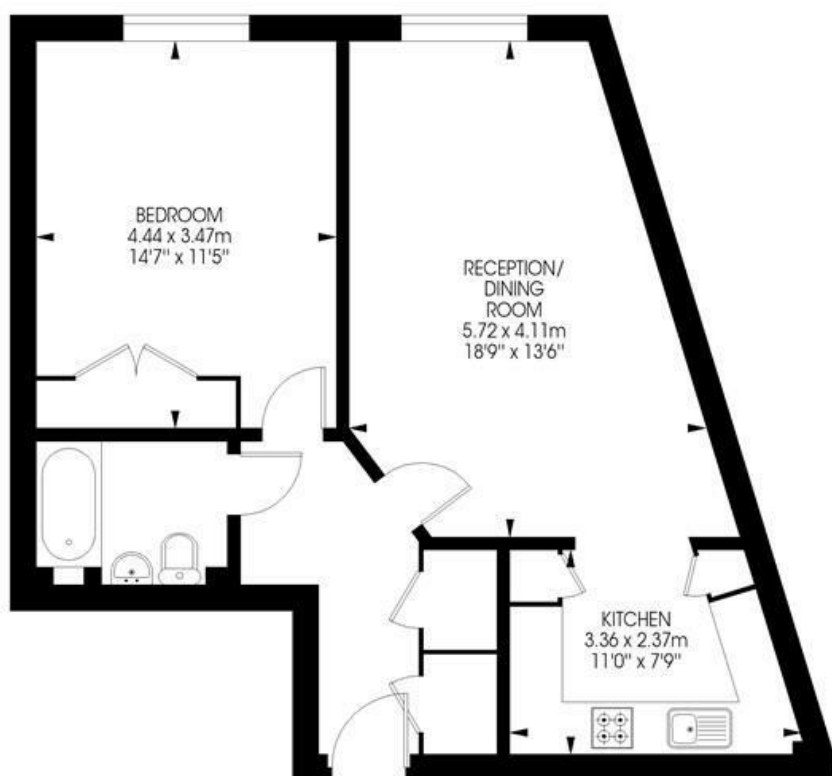
Council tax band C      EPC rating B (88)



Rosendale Road, SE24

**Forrest Court,  
Rosendale Road,  
Herne Hill, SE24  
1 bedroom flat**

Approximate internal area: **603 sqft / 56 sqm**



**First Floor**



While we try our very best, floor plans are produced as a guide only and we take no responsibility for the precise accuracy with which any property is represented.

Rosendale Road, SE24

